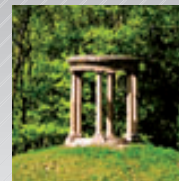
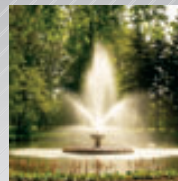


Europe/Latvia

# Alūksne

Municipality



[www.aluksne.lv](http://www.aluksne.lv)

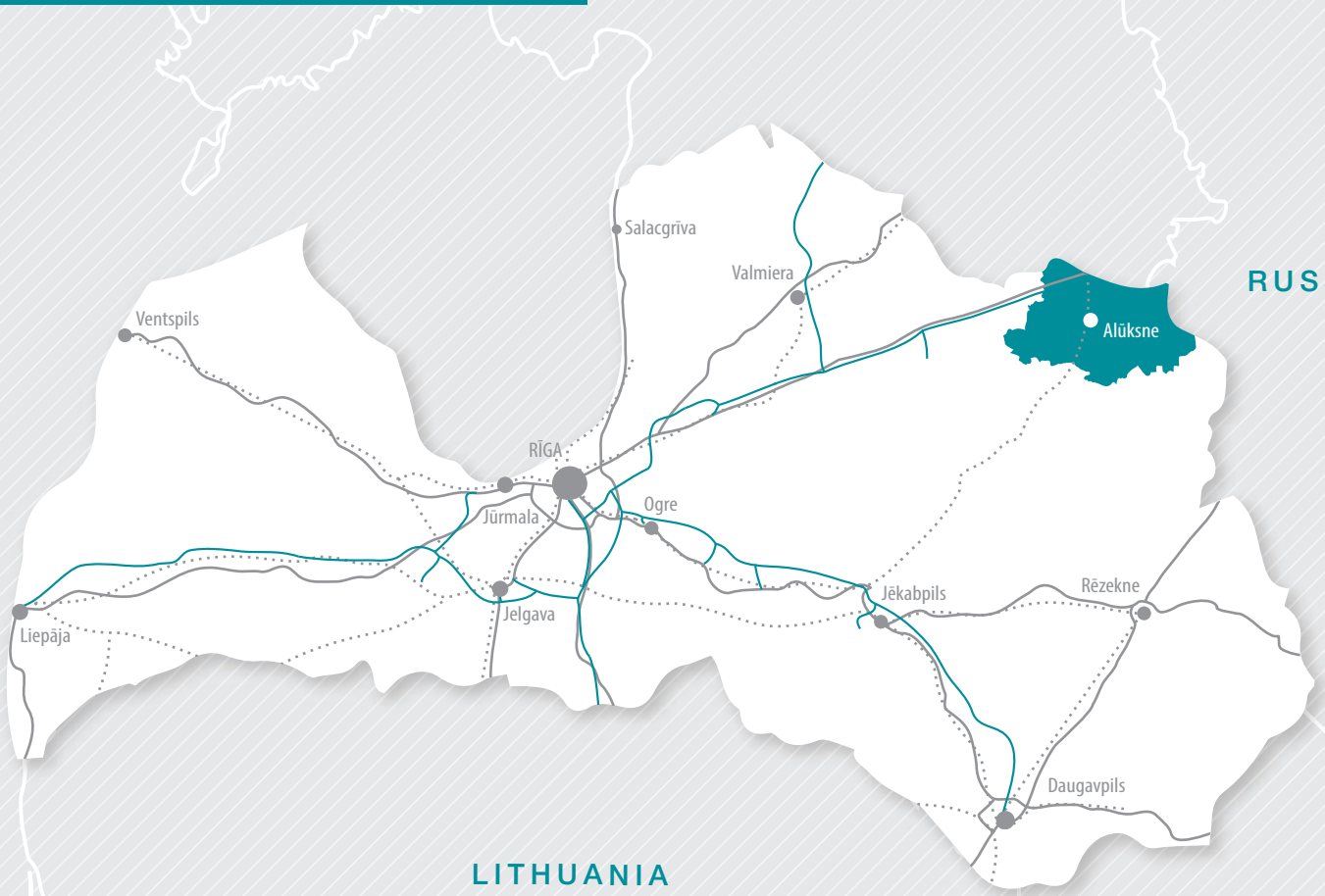


# Alūksne

The Crossroads of Three  
Country Highways.  
Create Your Future Here!

ESTONIA

RUSSIA



Legend

- Highways
- Railway tracks
- Natural gas pipelines

- Cities
- Alūksne Municipality

BELARUS



## Facts and Figures

### Location

- The north-east of Latvia, 200 km from the capital city, Riga, borders Estonia and Russia
- Municipality includes the town of Alūksne and 15 rural territories
- Area of Alūksne town – 14.2 km<sup>2</sup>
- Total area of the municipality – 1764.8 km<sup>2</sup>

### The Weather

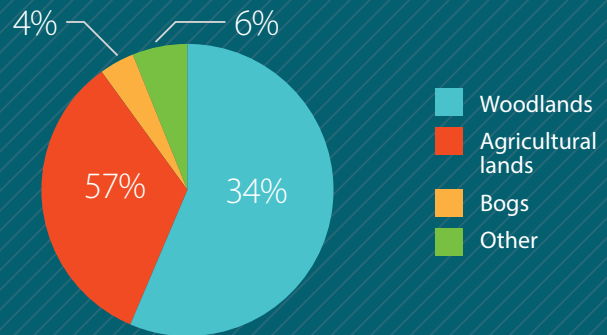
- Uneven topography. The highest point reaches 250 m above sea level
- The average annual precipitation – 700–800 mm
- The snow cover lasts from the end of November until the end of March
- There are the hottest summers and the coldest winters

The region is attractive to entrepreneurs due to its strategic geographical location, wilderness, beautiful landscapes, unpolluted and ecologically clean environment, unique historical and cultural heritage, forestry and agricultural resources, water resources – all that are favourable for tourism development.

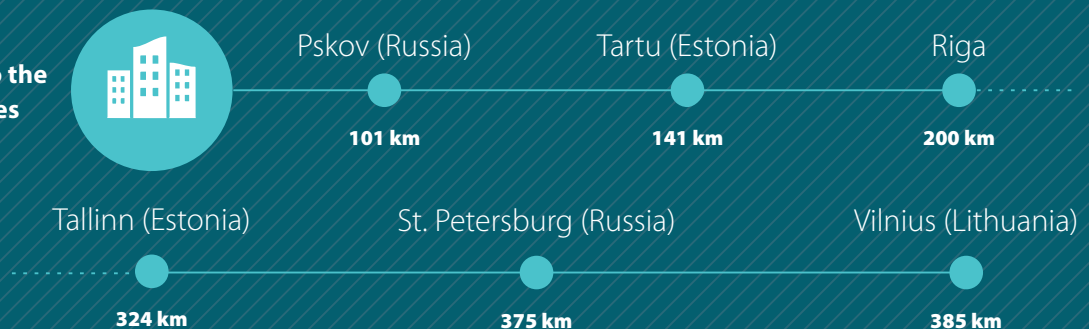
Natural resources – timber (including energy wood), sand-gravel, turf, sapropel, dolomite.

There are 124 lakes and two rivers – the Pededze and the Vaidava. The area of Alūksne Lake is 15.57 km<sup>2</sup> and its deepest point is 18.7 m.

### Territory



### Distance to the largest cities





## Local Community

Total population of Alūksne Municipality is 18 061 (46% live in Alūksne town).

### Higher education

Alūksne Branch of the Riga Teacher Training and Educational Management Academy provides programmes such as Human Resources/Office Administration, Occupational Health and Safety, Pedagogy, Public Relations, Entrepreneurship and Business Management, Business Organization, Pre-school and Primary School Teacher, Organization Management.

### Vocational education

Alsviķi Vocational School (6 km from Alūksne) – offers training programmes for the following professions: wood processing specialist, cook, tailor, social care giver, text editor, shoe mender, and construction workers. The target audience of Alsviķi Vocational School are disabled persons.

Four training centres/educational institutions offer more than 30 education programmes in IT, business management, beauty care, catering services, technical services etc.

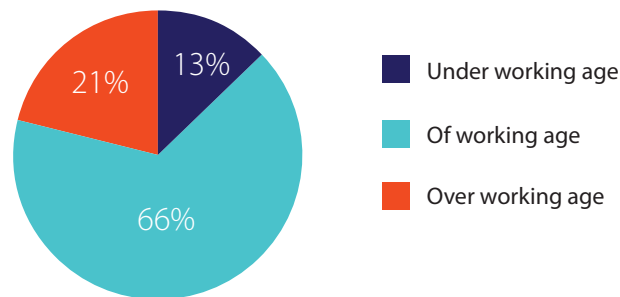
## Available labour force rate is 13.3%

Skilled labour is available mainly in woodworking, agriculture, construction, medical services, sales, transport and logistics.

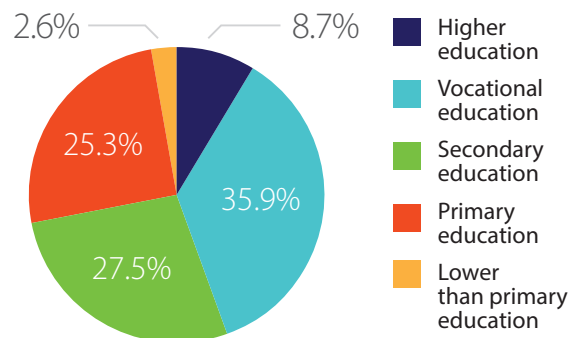
## Education opportunities

- Education – kindergartens, basic and secondary schools, a gymnasium and vocational schools.
- Sports – Children and Youth Sport School.
- Art and culture – art and music schools, amateur theatre groups, dancing, singing, orchestra and folk music groups.
- Youth activities – Children and Youth Centre, youth clubs.

## Age Structure



## Education Level of Available Labour force





## Infrastructure and Industry

### Infrastructure

The territory of Alūksne Municipality is crossed by the transport corridor of international importance Riga–St. Petersburg (E77) and several regional roads which link the municipality with its neighbours in Estonia and Russia. Several roads of regional and national significance have been upgraded in Alūksne town and municipality during the past few years.

The Alūksne Municipality territory is crossed by:

- A 110 kV power line that links Latvian and Estonian power networks
- A regional gas transmission pipeline Riga–Pskov

Natural gas infrastructure is available in Pededze rural territory, where a separate branch of gas mains has been built.

Modern technologies are applied for purifying drinking water in Alūksne town.

Fully equipped premises for workshops, business meetings and conferences are available in Alūksne town.

High-speed fibre-optic Internet infrastructure ensures broad opportunities in the IT field.

Social infrastructure – health services: a hospital with inpatient and outpatient services providing emergency assistance and further treatment, specializing in gynaecology and paediatrics.

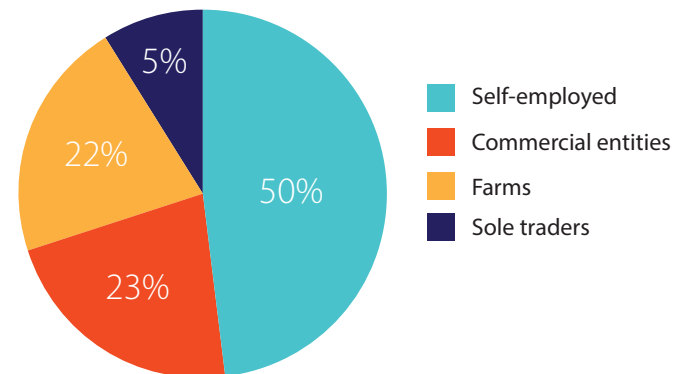
### Industry

There are 1496 economically active statistical units registered by the State Revenue Service, which means 62 economically active statistical units per 1000 residents.

The main sectors:

- woodworking
- agriculture
- forestry
- transport and logistics
- construction
- trade and catering services

### Types of Business



## Companies with the highest turnover

Turnover

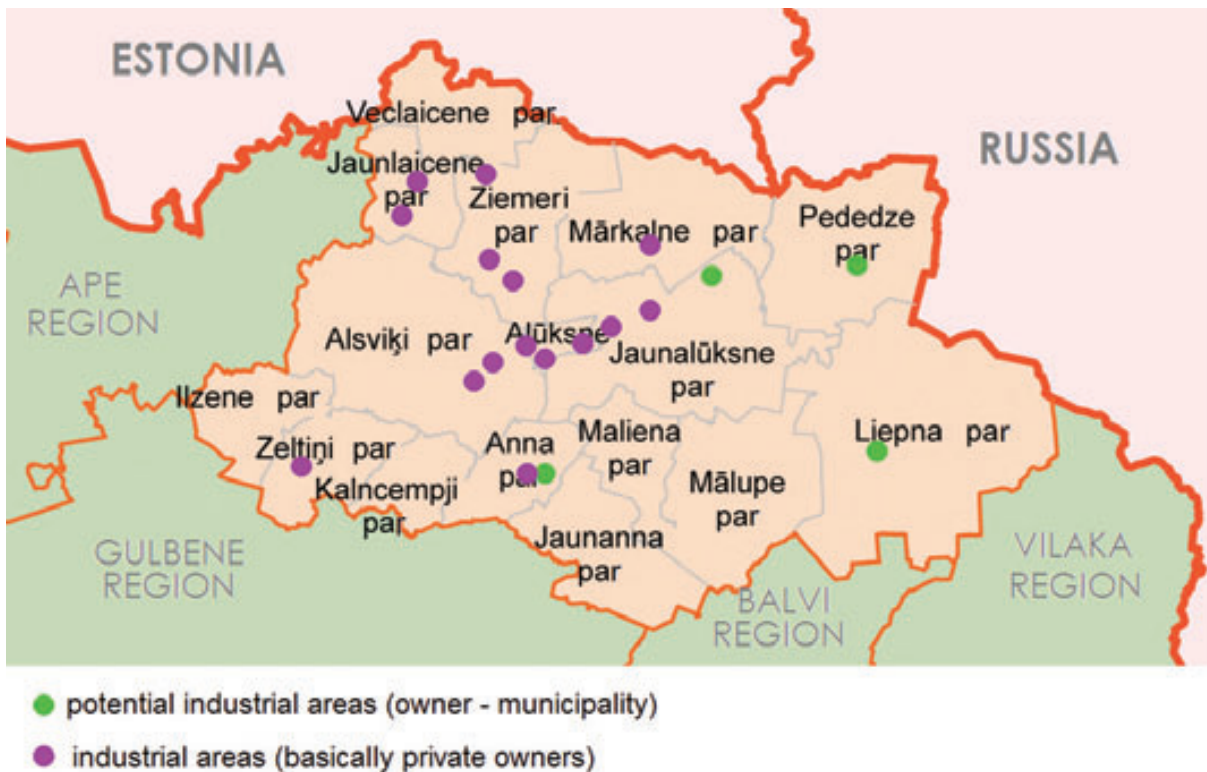
Company	Sector	Mln, EUR
"ALTA S" Ltd.	Retail trade and food	5.71
"JAUNLAICENES INDUSTRIJA" Ltd.	Cargo handling, quarrying	4.15
"VALDIS" Ltd.	Retail trade Construction of residential and non-residential buildings	3.70
"SILVIS" Ltd.	Forestry, woodworking	2.61
"OZOLMĀJAS" Ltd.	Construction of residential and non-residential buildings	2.53
"SORMA" Ltd.	Construction of roads and motorways	2.46
"ALŪKSNES ENERGOCELTNIEKS" Ltd.	Electricity and telecommunication system construction	2.46
"TORNIS DT" Ltd.	Retail trade, catering services	2.07
"OZOLI AZ" Ltd.	Woodworking	1.92
"VERNERS UN DRAUGI" Ltd.	Woodworking	1.73
JSC "ALMO HARDWOOD"	Woodworking	1.45

## Main foreign investments

Investor	Sector	Mln, EUR
OU EUROLIST (Estonia)	"AGRE ELEKTRO" Ltd. (sales of electric appliances)	486 977
OU EUROLIST (Estonia)	"BEST LĪZINGS" Ltd. (crediting)	428 284
Almo Hardwood AB (Sweden)	JSC "ALMO HARDWOOD" (woodworking)	142 287

## Industrial Opportunities

The municipality has 15 industrial territories with the total area of 121.7 ha. The 43 companies working there employ 602 people. The vacant industrial areas of more than 104 ha mostly belong to private owners (only a few hectares are owned by the municipality) and require investment to modernize infrastructure. Alūksne Municipality is planning to develop four more industrial areas:





- Anna parish industrial area (i.a.) – two areas – 4.3 ha and 6 ha. Power supply, water supply. Location beside an asphalt road.
- Jaunalūksne parish i.a. – three areas – 3.5 ha, 0.2 ha and 1.9 ha. Power supply, water supply. Location beside an asphalt road.
- Pēdēze parish i.a. – 3.1 ha. Power supply, gas supply. Location beside an asphalt road.
- Liepna parish i.a. – four areas – 1.9 ha, 1.4 ha, 0.9 ha and 0.4 ha. Power supply, area partly covered with asphalt. Location beside a road.

Alūksne Municipality is considering the possibility of decreasing property tax and rental expenses.

Alūksne Municipality cooperates with local and regional government in:

- Estonia (Võru, Haanja, Vastseliina, Rõuge)
- Lithuania (Joniski)
- Russia (Pskov)
- Sweden (Sundbyberg)
- France (Dijon, Marsannay-la-Cote)
- Belarus (Lyakhovich)
- Finland (Kuopio)

The cooperation agreements cover a variety of fields for common activities, including business support measures and the exchange of information.



*We are responsible for preserving our environmental values for future generations. We believe that an unpolluted environment and industry are not incompatible. We believe that it is possible to develop environmentally friendly technologies.*

## Tourism and Recreation Resources



### Nature

The area of Alūksne Municipality is mostly covered by spruce forests or spruce-pine forests rich in plant and animal species. There are boreal forests, mixed forests, and pure stands of grey alder. Other biotopes include dry grasslands in river valleys and on slopes, and wetlands. Because of a hilly relief, many sites have a high landscape value. The municipality is rich in lakes. The largest – Alūksne Lake – has an area of 15.437 km<sup>2</sup>, its average depth is 7.1 m, and it is inhabited by 12–16 fish species.



## Cultural and historical background

The earliest historical document to mention Alūksne was the First Pskov Chronicle in 1284 under the name of "Alyst". After the Livonian Order built its castle here in 1342, the place was called Marienburg for several centuries. Alūksne, having been ruled by Poles, Swedes, Germans, Russians, has accumulated a huge amount of historical evidence.

Alūksne Municipality keeps its heritage alive in its environment, museums, and traditions. Alūksne Municipality is proud of its amateur theatre, dance and

folk music groups, its choirs and the orchestra. Alūksne municipality is permanently improving its environment and building a new contemporary culture centre.

### Places of interest that only Alūksne Municipality can offer:

- narrow gauge train "Bānītis"
- the ruins of a Livonian Order castle
- the New Manor House of Alūksne
- former USSR nuclear missile base in Zeltiņi
- Viktors Ķirps' Ate Open-Air Museum in Kalncempji





## Tourism and Recreation Resources

### Sports

*Healthy lifestyle in a healthy environment.*

There are 15 sports clubs in Alūksne Municipality offering sports activities for people of different age. The most popular sports in Alūksne are biathlon, judo, motorboating, orienteering e.t.c. The annual sports events:

- the World and Europe Championship in Water Moto Sports
- International Christmas Tournament in Judo (for children and youth)
- Rally "Sarma"
- International Orienteering Competition "Malienas kausis"
- International Beach Volleyball Competitions "Katrīnas kausis"



Alūksne Municipality has suitable resources and climate (warm summer and cold winter) for different kinds of sports.

Top priorities in upgrading the sports infrastructure:

- Development of the Cross-Country Skiing Centre "Mežinieki"
- Construction of a new sports centre with European standard facilities



## Focus – Creating a New Rehabilitation Centre



Advantageous location – the historical centre of the town near Alūksne Lake

Expected services:

- medical procedures
- medical rehabilitation
- spa procedures
- indoor swimming pool services
- hotel services

Local government support:

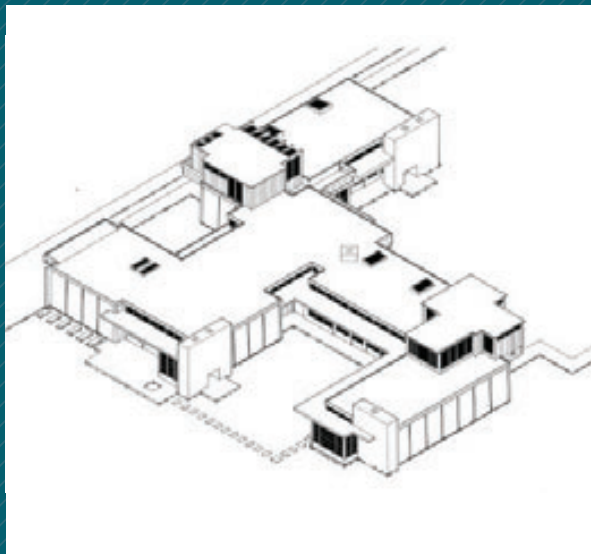
- Allocation of land
- Constructing access roads
- Connection to public utilities
- Contracting for pool services
- Political support – council decisions

- Cheap and available labour force
- Tax relief: real estate tax relief has been ensured by binding regulations for businesses which make investment into municipal infrastructure or create new jobs

A possibility to attract financial support from the European Union structural funds.





**Ownership**

Municipal

**Zoning**

Commercial development area

**Territory**

9546 m<sup>2</sup>

**Public utilities**

All public utilities networks are located next to the territory:

Sewerage, rainwater drainage, water mains, district heating, underground high and low voltage power lines.



**Contact Information:**

**Alūksne Municipality**

Dārza iela 11,

Alūksne, LV-4301, Latvia

E-mail: [dome@aluksne.lv](mailto:dome@aluksne.lv)

Official website: [www.aluksne.lv](http://www.aluksne.lv)



[www.norwaygrants.org](http://www.norwaygrants.org)



MINISTRY OF ENVIRONMENTAL  
PROTECTION AND REGIONAL DEVELOPMENT  
OF THE REPUBLIC OF LATVIA

[www.varam.gov.lv](http://www.varam.gov.lv)